



AGENTIC AUTOMATION.
ENTERPRISE EXECUTION.
GREATER EFFICIENCY.

Gentek Reg MCP: User Guide

Table of Contents

1	Overview	3
2	The Tools at a Glance.....	3
2.1	Official sources	4
3	Getting Connected.....	5
3.1	Creating your Gentek account	5
3.2	Register	5
3.3	Verify your email	6
3.4	You're ready.....	6
3.5	Add the connector in your AI assistant	7
3.5.1	In Claude	7
3.5.2	In ChatGPT	10
3.5.3	In other applications	13
4	Use Cases	13
4.1	Working with Validation Rules	13
4.1.1	Look up a field definition (EMIR).....	13
4.1.2	Compare UK and EU requirements.....	13
4.1.3	Check conditional requirements by product (SFTR).....	14
4.1.4	Investigate error codes and conditional logic (MiFIR).....	14
4.1.5	List a complete field reference	15
4.1.6	Worked example: diagnose a TR rejection	16
4.2	Working with Reference Data	17
4.2.1	Instrument lookups (FIRDS)	17
4.2.2	Entity lookups (GLEIF)	17
4.2.3	Worked example: trace a rejection to a retired LEI	18
4.3	Claude Excel Add-in	18
4.4	Check your reporting code against the rules.....	20
5	Writing Effective Queries	21
6	Troubleshooting.....	21
7	Support	22

1 Overview

The Gentek MCP Server brings Gentek's regulatory data directly into AI assistants such as Claude, ChatGPT, and Copilot, and it takes a few minutes to set up. (MCP, or Model Context Protocol, is the standard that lets AI assistants connect to outside tools like Gentek.) Instead of opening regulator spreadsheets, finding the right sheet, and cross-referencing columns, you ask a question in natural language. Your assistant searches the official validation rules and reference data and returns a sourced answer, citing the source file, sheet, and cell reference, with a link to the regulator's published data.

The service covers two areas:

- **Validation rules:** field definitions, formats, error codes, conditional logic, and reporting requirements for EMIR, SFTR, and MiFIR, in both UK (FCA) and EU (ESMA) versions.
- **Reference data:** instrument lookups from FIRDS (both ESMA and FCA data) and entity lookups from the GLEIF LEI database, sourced from the same registers regulators use, not unverified web results.

It serves reporting, compliance, and oversight teams: routine checks are faster, and every answer can be trusted because it comes from the same official sources the regulators use and shows exactly where it came from.

Connecting takes a few minutes. This guide explains how to connect the Gentek MCP Server to your AI assistant.

If your organisation would like hands-on help getting connected, or needs specialised changes, we would be glad to assist. Just email us at info@gentek.ai.

2 The Tools at a Glance

The first release provides 8 tools. You do not call them directly: describe what you need in plain language and your assistant picks the right tool, fills in the details, and presents the result.

Capability	What it answers	Tool name
EU EMIR validation rules	Field definitions, formats, error codes and field conditionality requirements for EU EMIR derivative and margin reporting (ESMA)	search_eu_emir_validation_rules
UK EMIR validation rules	The same, for UK EMIR (FCA)	search_uk_emir_validation_rules

Capability	What it answers	Tool name
EU SFTR validation rules	Transaction, margin, and reuse validations for securities financing transactions (ESMA)	search_eu_sftr_validation_rules
UK SFTR validation rules	The same, for UK SFTR (FCA)	search_uk_sftr_validation_rules
EU MiFIR validation rules	Transaction reporting field validations and CFI classification rules (ESMA)	search_eu_mifir_validation_rules
UK MiFIR validation rules	The same, for UK MiFIR (FCA)	search_uk_mifir_validation_rules
Field reference tables	Complete field listings for any regulation sheet, filterable by event type, SFT type, level, or requirement	list_regulation_fields
Reference data lookup	Instruments in FIRDS (EU + UK) and entities in the live GLEIF LEI database	search_reference_data

2.1 Official sources

Every answer links back to the regulator's published file. The validation rules are sourced from the workbooks below; reference data comes from the live registers. You can download any of these directly.

- **EU EMIR (ESMA):** [esma74-362-2683_emir_refit_validation_rules_reconciliation_tolerances_and_template_for_notifications_of_dq_issues.xlsx](#)
- **UK EMIR (FCA):** [uk-emir-validation-rules-2026.xlsx](#)
- **EU SFTR (ESMA):** [esma70-151-1019 consolidated_sftr_validation_rules.xlsx](#)
- **UK SFTR (FCA):** [uk-sftr-validation-rules-v1.0.xlsx](#)
- **EU MiFIR (ESMA):** [esma65-8-2594 annex_1_mifir_transaction_reporting_validation_rules.xlsx](#)
- **UK MiFIR (FCA):** [transaction-reporting-validation-rules.xlsx](#)
- **FIRDS (EU, ESMA):** [ESMA FIRDS register](#)
- **FIRDS (UK, FCA):** [FCA FIRDS register](#)
- **GLEIF (LEI database):** [search.gleif.org](#)

3 Getting Connected

You add Gentek to your AI assistant once, and the tools are then available in every conversation. It takes a few minutes.


3.1 Creating your Gentek account

Connection begins by creating a Gentek account. If you do not have one, sign up [here](#) and register. It is self-service and takes a few minutes. Once registered, you are issued the OAuth client ID and client secret you will need when connecting to your AI provider.

3.2 Register

Start by creating a Gentek account. When you reach the Gentek sign-in page, select New user? Register and complete the form.

- Email: your work email
- Password
- First name, Last name, Company, Job title, and Reason for access.



 GENTEK

Sign In

Email

Password

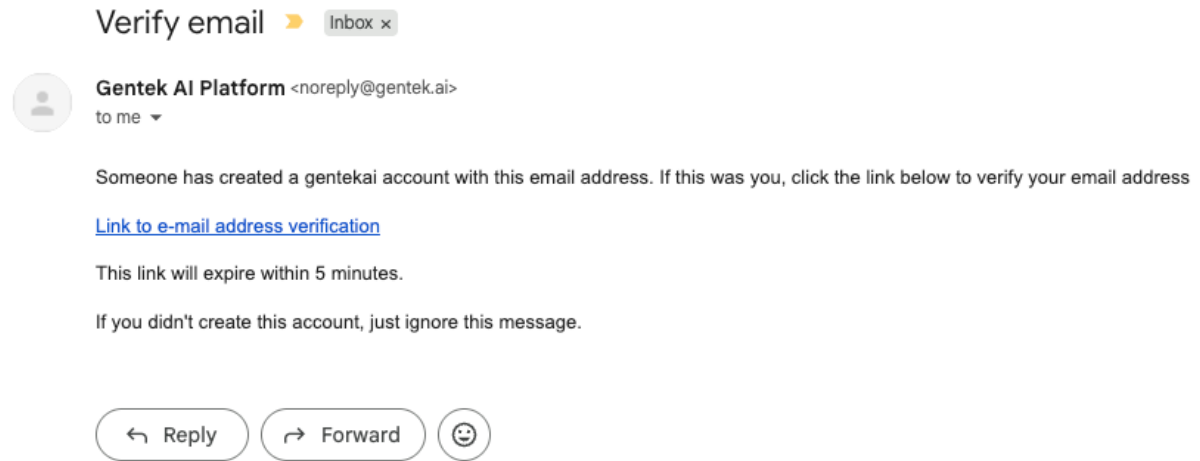
[Forgot Password?](#)

Sign In

New user? [Register](#)

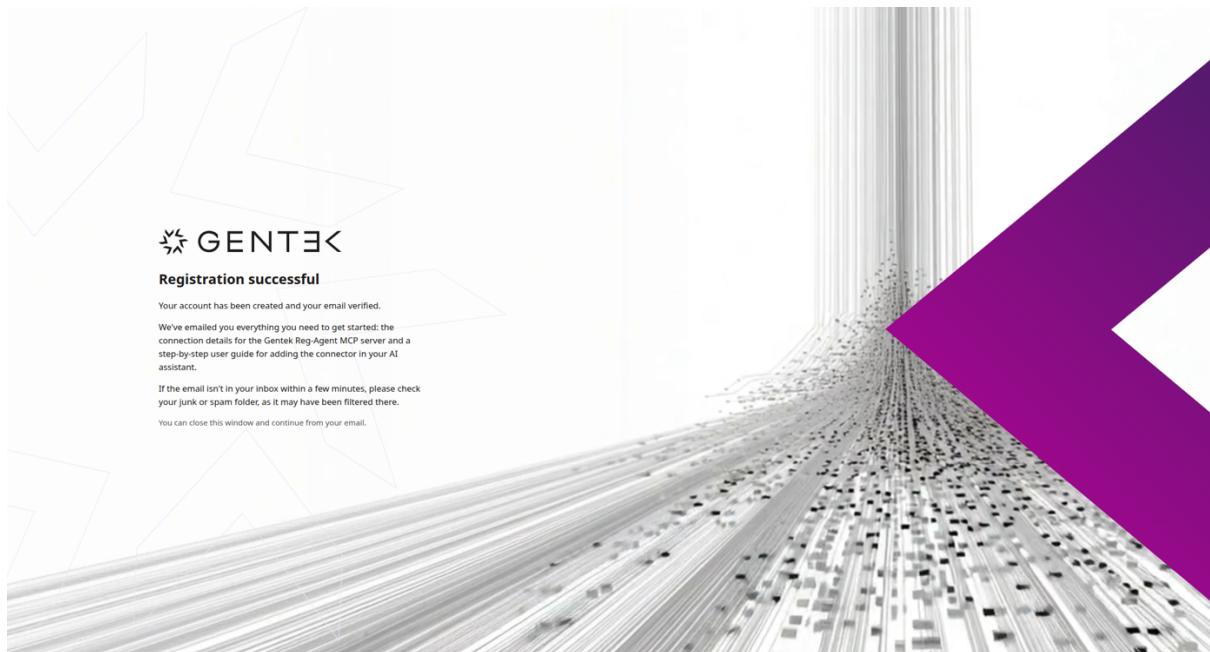
3.3 Verify your email

Gentek emails a verification link to the address you registered. Open it and click the link to confirm your address; you must verify before you can sign in. If it does not arrive within a few minutes, check your spam folder, then use Resend.



3.4 You're ready

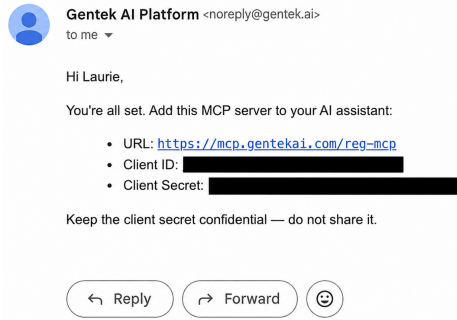
Once you click the verification link, you will see this page.



You will then receive a second email containing the credentials you need for the following steps. You will add these to your AI provider when you connect.

Signing in later. After the first time, you sign in with just the email and password you created here.

You're connected to Gentek Reg-Agent Inbox x



3.5 Add the connector in your AI assistant

Add the connector URL, client ID, and client secret to your assistant. The first time you connect, it will ask you to sign in to your Gentek account. Use the email and password you created when registering, not the client ID or client secret from the email above.

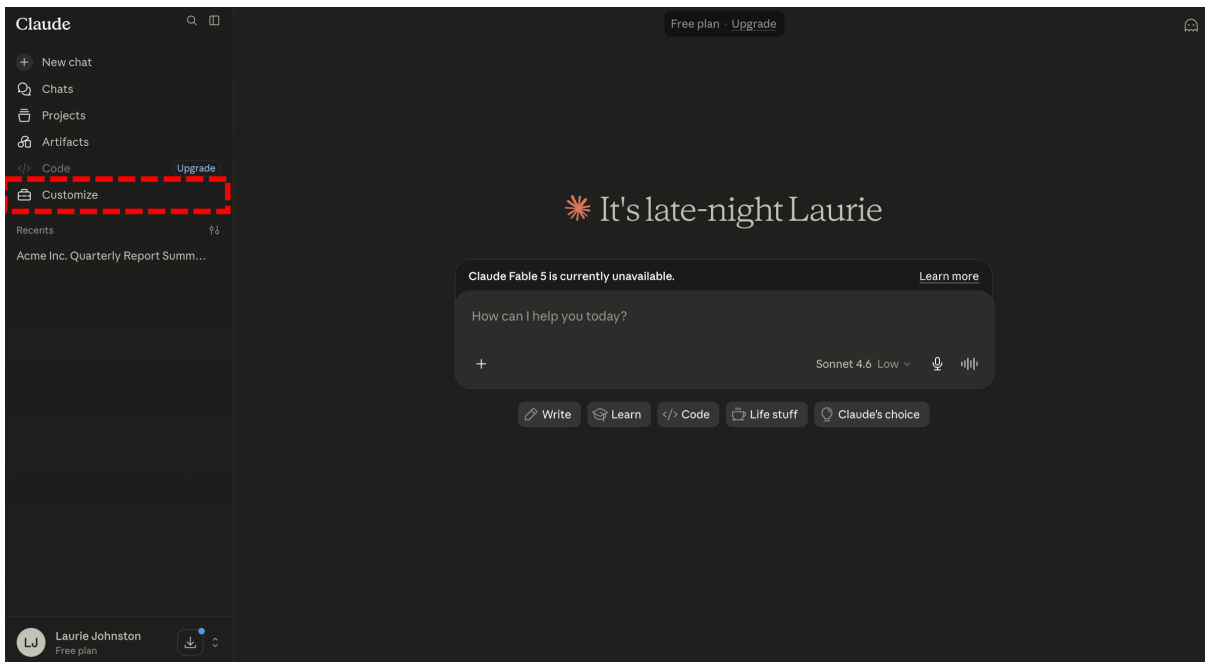
If you are already signed in to your AI provider in the same browser, you will likely not be prompted to sign in again.

Two common sign-in errors: in Claude, being prompted to open the desktop app and getting an error (the desktop app is signed in to a different account than Claude.ai); and a cookie error (you started signing in in one browser and finished in another). Use a single browser and matching accounts throughout. See the Troubleshooting section for details.

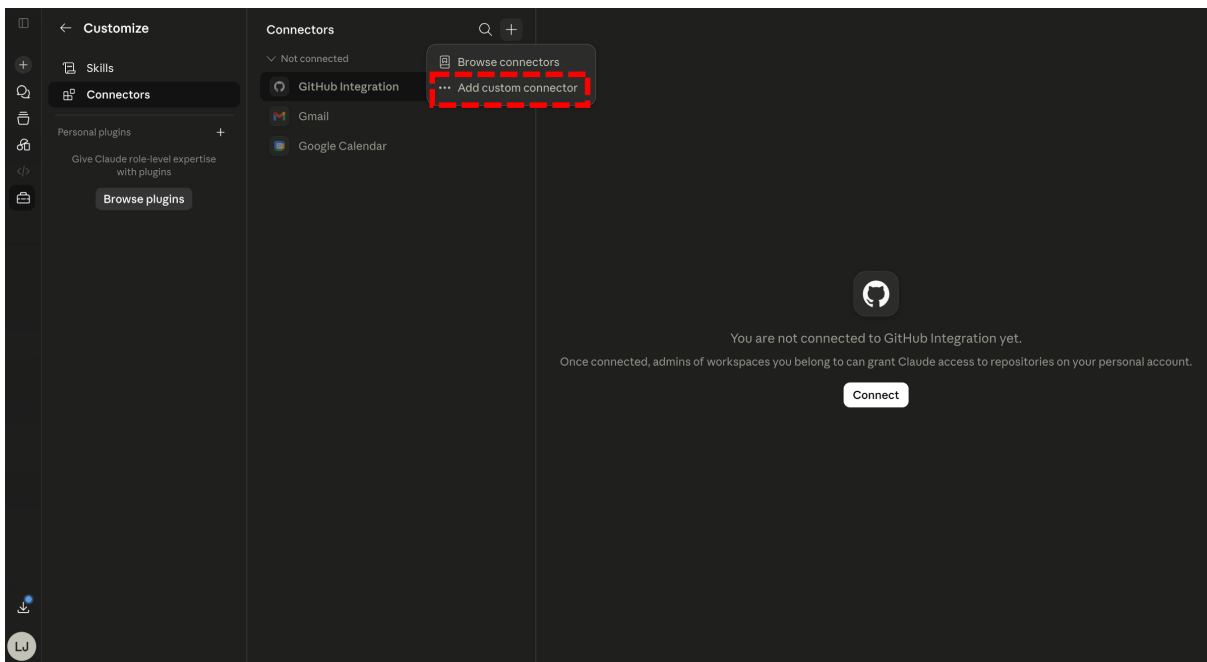
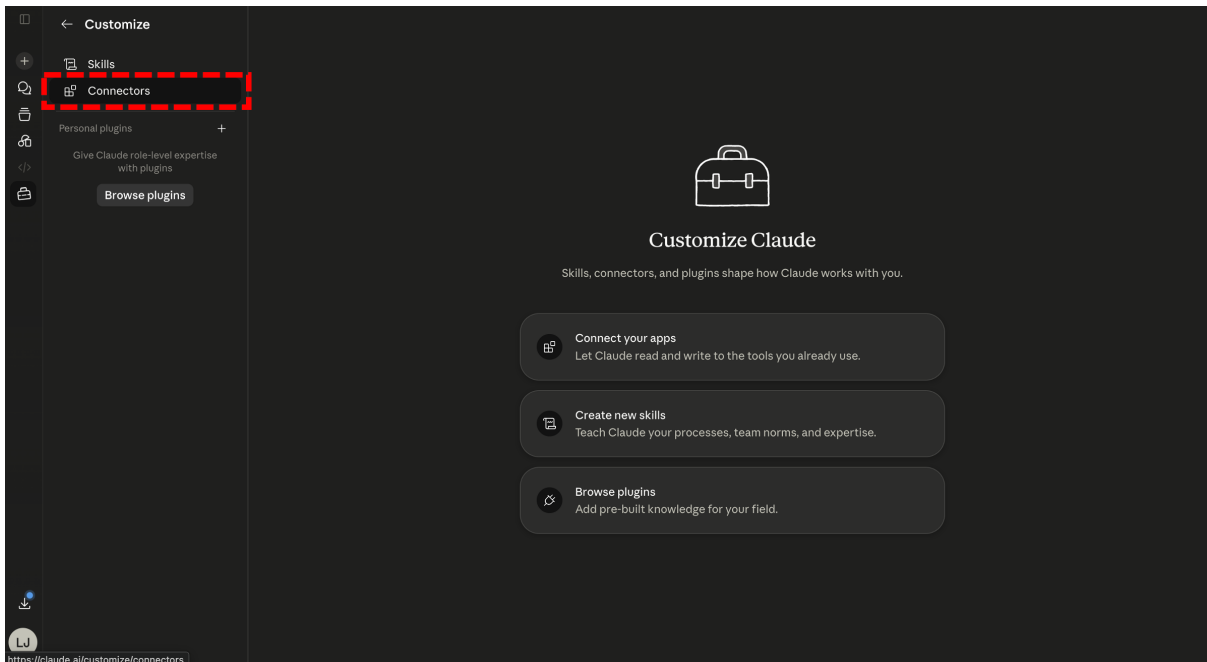
3.5.1 In Claude

Note: connecting the Gentek connector here also makes it available in your Claude Code sessions, signed in with the same Gentek account. No separate setup is needed.

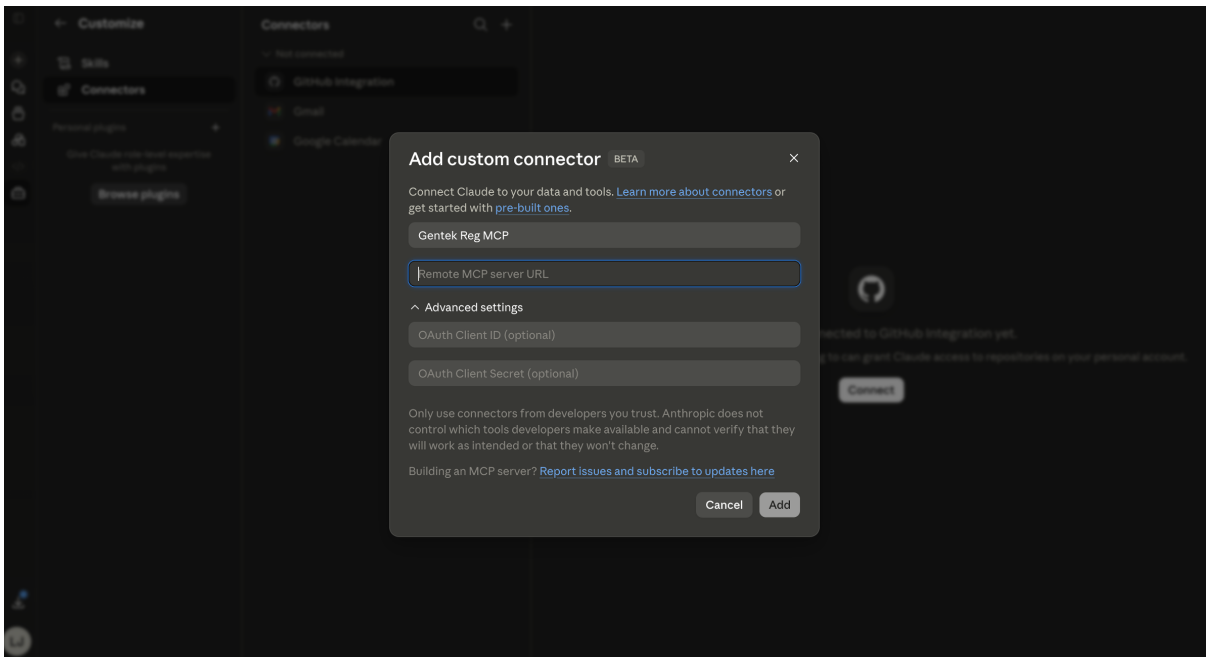
1. Open Settings. Go to claude.ai and open the sidebar, then select Customize.



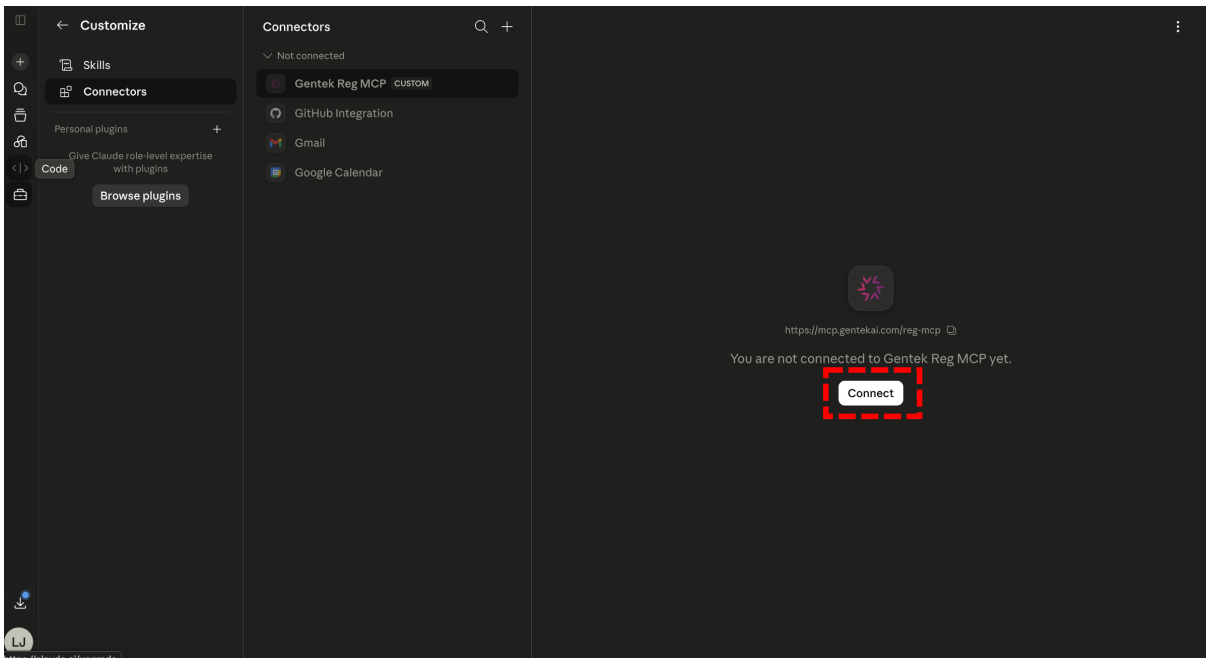
- Go to Connectors. Select Connectors, then click the + next to the search box and select Add custom connector. On Team and Enterprise plans you must be an admin to add a connector.



3. **Enter details.** Give the connector a name (e.g. Gentek Reg Knowledge) and paste the connector URL from your email. Under the advanced settings, enter the client ID and the client secret provided during registration. Click Add.



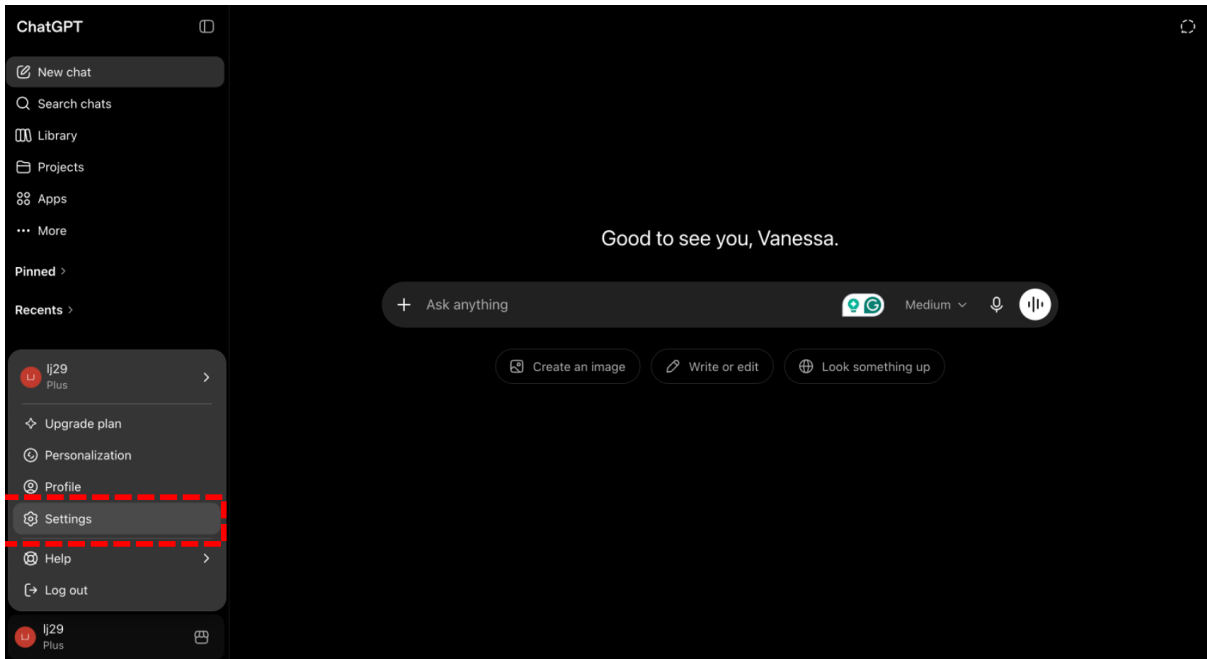
4. **Press Connect and sign in using the Gentek credentials you created above.** You will be redirected to sign in with your Gentek account. Once authenticated, Claude has access to all 8 regulatory tools.



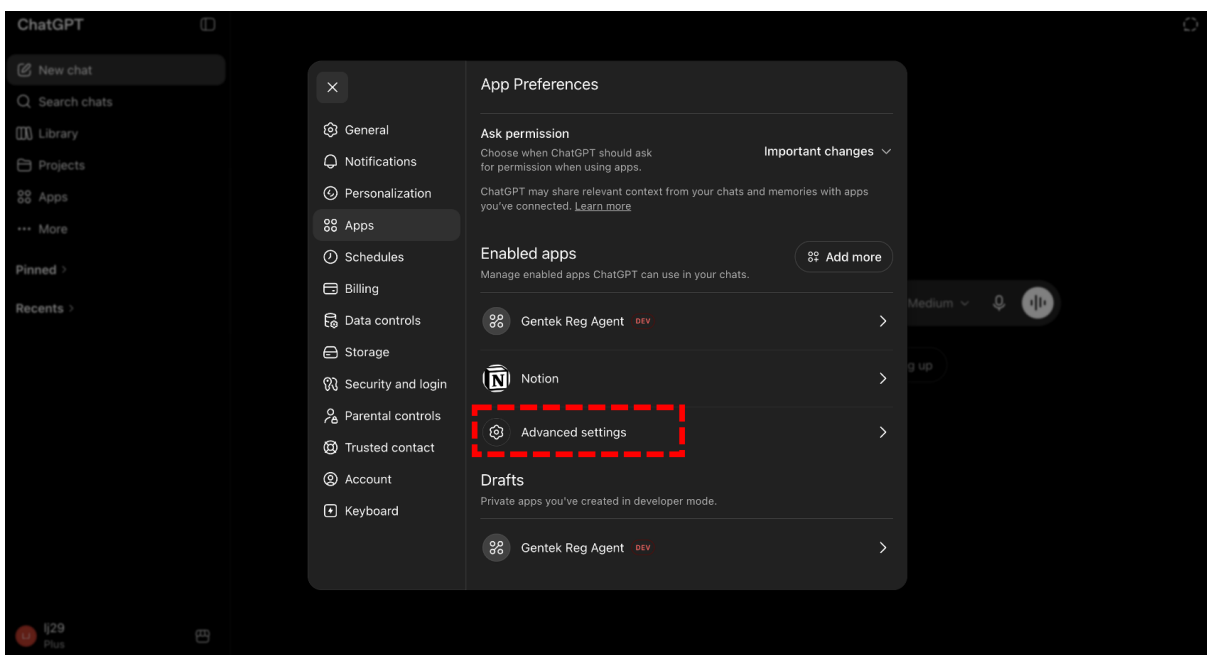
For the latest provider steps, see [Anthropic's guide to custom connectors via remote MCP](#).

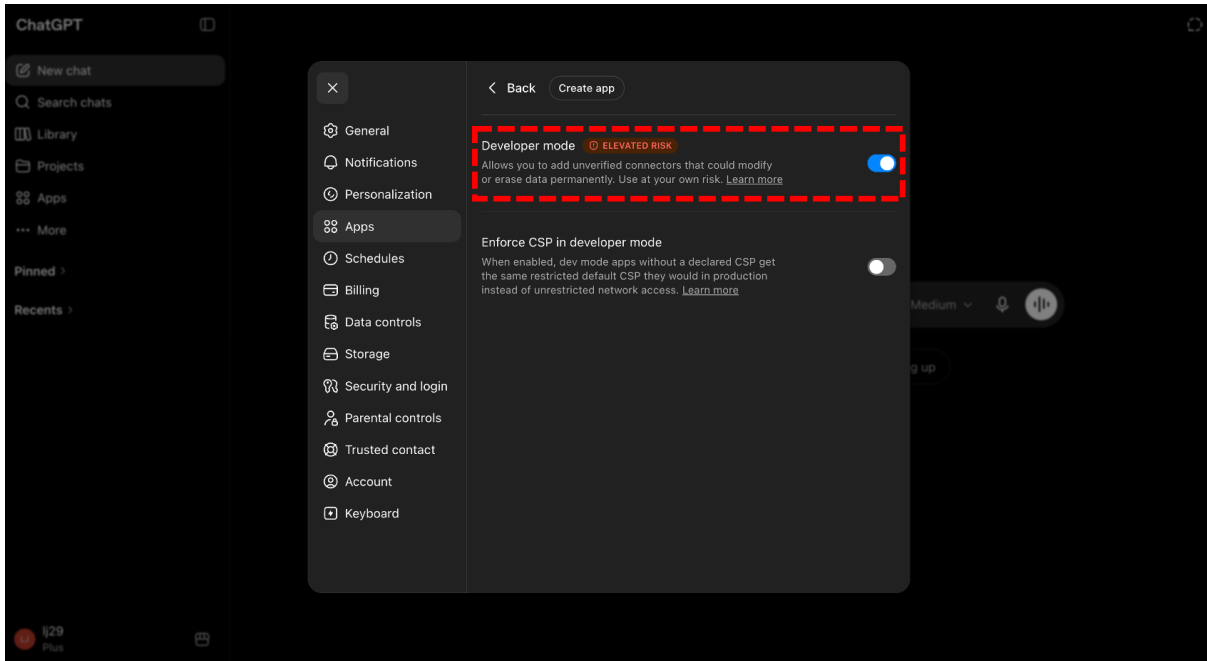
3.5.2 In ChatGPT

1. **Open Settings.** Go to chatgpt.com, click your profile icon, and select Settings.

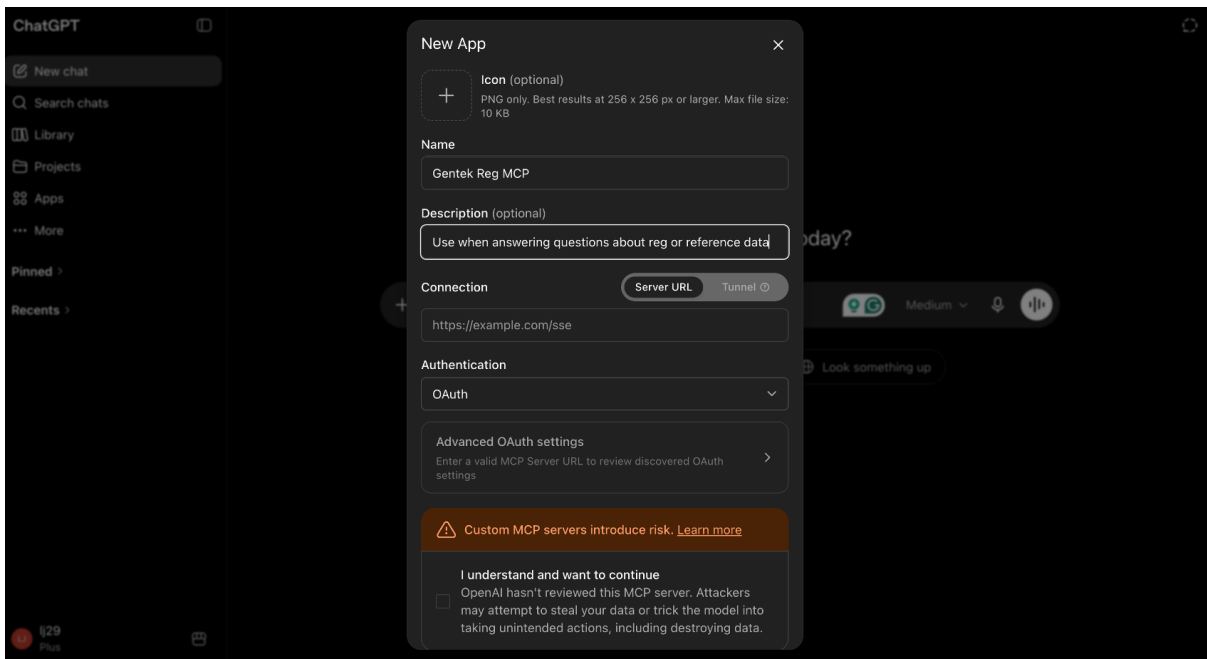


2. **Enable developer mode.** In Settings, open Apps → Advanced settings and turn on Developer mode; and then press Create app next to the Back button in the top left.

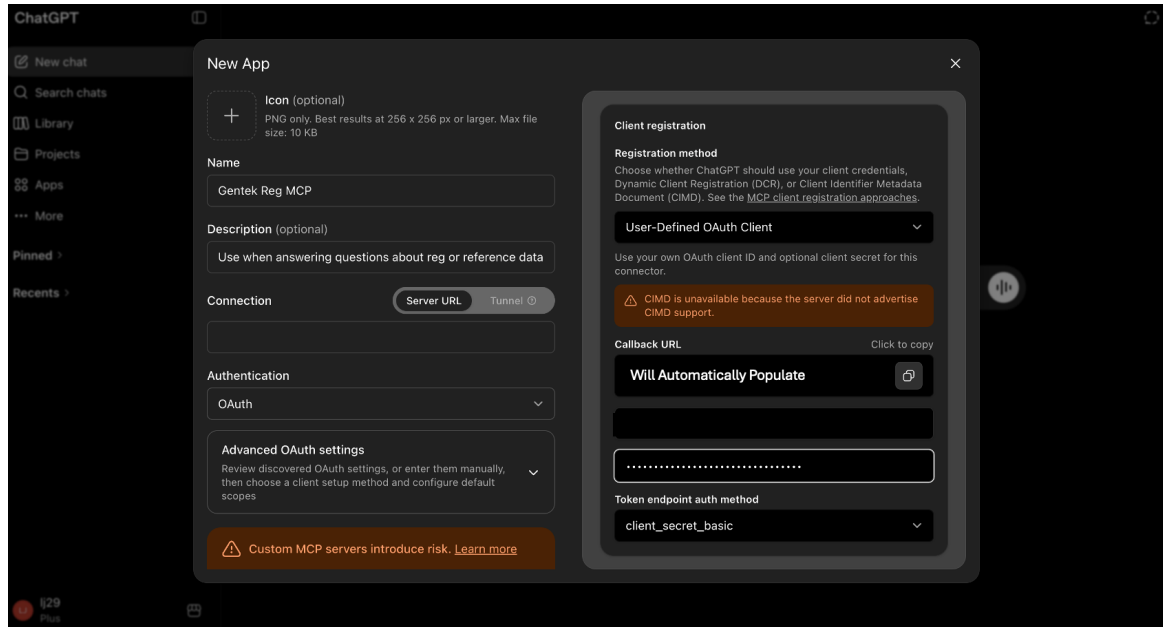




3. **Create the app.** Create and enter a name (e.g. Gentek Reg Knowledge). Add a brief description of when to use this MCP server, e.g. “Use this server when answering regulatory reporting or reference data questions.” then Paste the connector URL from your email into the connection box. You must enter the server URL before you can continue to the next step.



- Configure Auth.** Select OAuth as the connection type. Open Advanced auth settings, set Client registration to User-Defined OAuth Client, and leave the callback URL as is. Enter the Client ID and Client Secret from the email sent by Gentek, and set the Token endpoint auth method to client_secret_basic. Accept the terms and conditions, then click Create.



- Press Sign in**



For the latest provider steps, see [OpenAI's guide to developer mode and MCP apps in ChatGPT](#).

3.5.3 In other applications

The clients above are the ones Gentek has tested. Any other application that supports remote (streamable HTTP) MCP servers with OAuth should connect the same way: add a new MCP server, enter the connector URL from your email, set the client ID and secret to what you receive in the email during registration, and sign in with your Gentek account. These clients are not officially supported or tested by Gentek and may behave differently, but should generally work.

For background on the protocol and a directory of compatible clients, see [the Model Context Protocol documentation](#).

4 Use Cases

The examples in this section are query/response pairs captured from the Gentek MCP Server. The responses shown are shortened to the key lines to keep this guide readable; in practice your assistant returns the full detail and then summarises, reasons over, and explains it in context.

4.1 Working with Validation Rules

Each example uses one regulation to illustrate, but the same approach works across all of them (EMIR, SFTR, and MiFIR, UK and EU). Ask a more specific question for a more specific answer, or a broader one for a general overview.

4.1.1 Look up a field definition (EMIR)

Ask for any field by name or number. The response includes the description, format, error codes, whether the field is mandatory, conditional, optional, or not applicable (M / C / O / N/A) per event type and level, and the exact source.

EXAMPLE PROMPT

What are the validation rules for the UTI field under EU EMIR for a new trade?

RESPONSE (EXCERPT)

FIELD: UTI (No. 2.1)

Description: Unique Trade Identifier as referred to in Article 7 ...

Format: ISO 23897 UTI. Up to 52 alphanumeric characters, only upper-case
A-Z and digits 0-9 are allowed

Error codes: EMIR-VR-2001-01 ... EMIR-VR-2001-04

REPORTING REQUIREMENTS: M | NEWT | Trade level | cell=L26
M | NEWT | Position level | cell=U26

SOURCE: esma74-362-2683_emir_refit_validation_rules_... .xlsx
Sheet: Validations_Cpty_derivative

4.1.2 Compare UK and EU requirements

Ask about UK and EU in one prompt to get a side-by-side answer for the same field.

EXAMPLE PROMPT

How does the UTI field differ between UK EMIR and EU EMIR for action type NEWT?

RESPONSE (EXCERPT)

UK EMIR – FIELD: UTI (No. 2.1)

1. Old format UTI <TxId/Prtry/Id>: up to 52 alphanumerical characters. Special characters ":", ".", "-", "_" allowed (not at start/end).
2. For action types 'NEWT' and 'POSC' the UTI must be provided in the new format <TxId/UnqTxldr>
3. Not allowed to change the content of this field once reported.

SOURCE: uk-emir-validation-rules-2026.xlsx (FCA)
Sheet: Trade validations auth.030

4.1.3 Check conditional requirements by product (SFTR)

SFTR validations can be filtered by SFT type (repo, buy-sell-back, securities lending, margin lending) and by event type and reporting level.

EXAMPLE PROMPT

Under EU SFTR, when is the Collateral quality field required for repos?

RESPONSE (EXCERPT)

FIELD: Collateral quality (No. 2.90)

Description: Code that classifies the risk of the security used as collateral.

Format: 'INVG' Investment grade | 'NIVG' Non-investment grade
'NOTR' Non-rated | 'NOAP' Not applicable

REQUIREMENTS (Repo): C | NEWT | Trade level C | COLU | Trade level
O | CORR | Trade level N/A | MODI | Trade level

SOURCE: esma70-151-1019_consolidated_sftr_validation_rules.xlsx
Sheet: Cpty_Transactions Auth.052

The same question against UK SFTR draws on the FCA's published rules (uk-sftr-validation-rules-v1.0.xlsx).

4.1.4 Investigate error codes and conditional logic (MiFIR)

MiFIR responses include the full validation rule set per field (XML schema rules, application rules, error codes, and error text), so you can work back from a rejection to its cause.

EXAMPLE PROMPT

Our MiFIR report was rejected with error CON-070. What does the buyer identification code field require?

RESPONSE (EXCERPT)

FIELD 7: Buyer identification code

What CON-070 Means

Attribute	Detail
Error code	CON-070
Validation Rule	Rule 27 – Application-level validation, Set 1
Error text	"Buyer LEI XXX is not valid"
Triggered when	Submitted LEI in Field 7 fails one or more GLEIF database checks

How to Diagnose a CON-070 Rejection

Check the buyer's LEI against the GLEIF database for the following common failure reasons:

Failure Reason	What to Check
LEI status is "Retired" or "Annulled"	LEI has been cancelled – obtain correct current LEI
LEI status is "Lapsed"	LEI not been renewed – still reportable but worth flagging to the buyer
InitialRegistrationDate > trade date	LEI registered after transaction date – verify you have correct LEI
EntityStatus "Inactive" and LastUpdateDate < trade date	Entity inactive and not updated on or after the trade date
Typographical error	20-character format check (Rule 26 / XML schema) would catch this before CON-070, but verify the LEI string regardless

4.1.5 List a complete field reference

Where a single field lookup is not enough, ask for the full reference table of a regulation sheet, filtered to what you need, for example every mandatory field for a margin update.

EXAMPLE PROMPT

List all mandatory fields for a margin update (MARU) under EU EMIR.

RESPONSE (EXCERPT)

Here are all **10 mandatory fields** for a **Margin Update (MARU)** report under **EU EMIR**, drawn from the ESMA EMIR Refit validation rules – sheet: **Validations_Margins**.

Parties to the Derivative

Field No.	Field Name	Format	Notes
3.1	Reporting Timestamp	ISO 8601 UTC YYYY-MM-DDThh:mm:ssZ	Date/time of submission to the TR
3.2	Report Submitting Entity ID	LEI (20 alphanumeric)	The entity submitting the report (or delegate)
3.4	Counterparty 1 (Reporting Counterparty)	LEI (20 alphanumeric, must be duly renewed)	The counterparty fulfilling the reporting obligation
3.5	Counterparty 2 Identifier Type	Boolean: TRUE / FALSE	Indicates whether an LEI was used for CP2
3.6	Counterparty 2	LEI or up to 72-char code (natural persons)	Second counterparty identifier

Collateral

Field No.	Field Name	Format	Notes
3.7	Collateral Timestamp	ISO 8601 UTC YYYY-MM-DDThh:mm:ssZ	As-of date/time for the margin values

3.8	Collateral Portfolio Indicator	Boolean: TRUE / FALSE	Whether margining is on a portfolio basis
3.11	Collateralisation Category	4-char alpha (e.g. UNCL, PRCL, OWC1)	Whether/how a collateral agreement exists
3.28	Action Type	MARU (Margin update) or CORR (Correct)	Must be MARU for this report type
3.29	Event Date	ISO 8601 YYYY-MM-DD	Date for which the collateral info is provided

4.1.6 Worked example: diagnose a TR rejection

A common multi-step task is working back from a trade repository rejection (NACK) to its cause, especially where UK and EU rules diverge. Here the assistant checks the EU SFTR rules for a cleared repo at position level and compares them against the UK rules.

EXAMPLE PROMPT

Our EU SFTR report SFTR-EXC-20260609-00318 was rejected with SFTR-VAL-FAIL, but the UK leg of the same trade was accepted. It's a cleared repo at position level (NEWT). Check it against the EU SFTR rules, compare with the UK rules, and tell me what's likely causing the EU rejection. [attach trade.xml]

RESPONSE (EXCERPT)

EU REJECTION ANALYSIS – SFTR-EXC-20260609-00318

Rejection code: SFTR-VAL-FAIL (content validation failure).

PRIMARY ISSUE – Field 2.2 Report Tracking Number is blank

Submitted: 2.5 Cleared = true | 2.4 Type = REPO | 2.2 = <blank>

Under EU SFTR (ESMA Auth.052), for NEWT / Position level / Repo, field 2.2 is C (conditionally mandatory). The condition:

"In the case of transactions resulting from clearing, the prior

UTI ... of the original bilateral transaction shall be reported."

Cleared = true, so the EU TR expects 2.2 populated with the UTI of the original bilateral (pre-novation) repo. Blank => CON-VAL-FAIL.

Why did the UK accept it? UK FCA rules treat field 2.2 as N/A for this exact case (NEWT / Position level / Repo), so the UK TR never validates it. A genuine post-Brexit divergence between the regimes.

Fix: populate 2.2 with the UTI of the original bilateral repo that was novated to the CCP. If executed and cleared intraday on-venue, the venue-generated execution identifier may be used instead.

FIELD SUMMARY

Field	EU	UK	Status
2.2 Report Tracking Number	C (cleared)	N/A	Likely trigger
All other checked fields	M/C (ok)	M/C	OK

SOURCE: ESMA esma70-151-1019_consolidated_sftr_validation_rules.xlsx (Cpty_Transactions Auth.052); FCA uk-sftr-validation-rules-v1.0.xlsx (Cpty_Transactions Auth.052)

4.2 Working with Reference Data

4.2.1 Instrument lookups (FIRDS)

Paste an ISIN (or search by instrument name, CFI code, issuer LEI, or venue MIC) and the server returns the full FIRDS record from both ESMA (EU) and FCA (UK) data, showing where an instrument is listed and which regulator oversees it.

EXAMPLE PROMPT

Look up ISIN GB00BH4HKS39. Is it in FIRDS for both the EU and the UK?

RESPONSE (EXCERPT)

INSTRUMENT: Vodafone Group PLC (GB00BH4HKS39)
CFI: ESVUFR (Equity) **Issuer LEI:** 213800TB53ELEUKM7Q61
Venue: AQEA **Currency:** USD **Competent authority:** DE
Valid from 2023-10-24, still valid – Status: ACTIVE
Source: ESMA FULINS 2026-06-13
INSTRUMENT: Vodafone Group PLC (GB00BH4HKS39)
Venue: AQEA **Currency:** GBP **Competent authority:** GB
Status: ACTIVE – **Source:** FCA FULINS 2026-05-30
SOURCE: FIRDS (EU + UK) local store – EU (ESMA) 2026-06-13, UK (FCA) 2026-05-30

Each record shows when the data was last refreshed, and EU and UK results are kept separate. To filter to one jurisdiction, just ask (e.g. “only check UK FIRDS”).

4.2.2 Entity lookups (GLEIF)

Search by LEI code or entity name. The server searches the global LEI database and returns the full entity record: registration status, jurisdiction, legal and headquarters addresses, corporate hierarchy, and category. Active, lapsed, and duplicate records are clearly ranked.

EXAMPLE PROMPT

Is LEI 213800TB53ELEUKM7Q61 active, and who is it registered to?

Response (excerpt)

ENTITY: Vodafone Group PLC
LEI: 213800TB53ELEUKM7Q61
Status: ACTIVE **Registration:** ISSUED
Jurisdiction: GB **Company number:** 01833679
Legal address: Vodafone House, The Connection,
Newbury, RG14 2FN, GB
Last updated: 2026-02-03 **Next renewal:** 2027-04-04
SOURCE: GLEIF (last updated 2026-02-03)

The full GLEIF record includes registration status and last update date, cited to GLEIF, so you can confirm an entity is active before you rely on its LEI.

4.2.3 Worked example: trace a rejection to a retired LEI

A common reference-data combo is checking an instrument and its issuer in one go: look the ISIN up in FIRDS, then check the issuer LEI in GLEIF. Here the assistant runs both lookups together and spots that the issuer LEI is no longer active.

EXAMPLE PROMPT

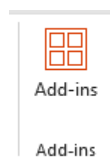
Our reports on FR0011855188 keep getting rejected on the issuer details, can you work out why?

RESPONSE (EXCERPT)

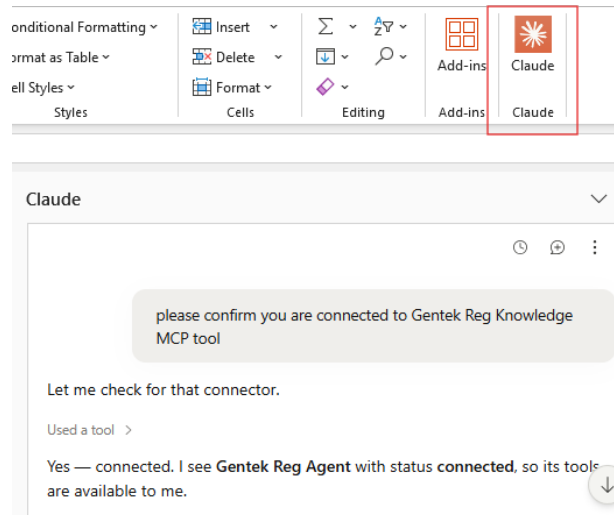
INSTRUMENT: LYXOR IBEX MID UCITS ETF (FR0011855188)
 CFI: CEXXXX Issuer LEI: 549300CWX1K2UKG6Q568
 Venue: BMTF Currency: EUR Competent authority: GB
 Status: ACTIVE – Source: FCA FULINS 2026-06-06
 ISSUER: Lyxor International Asset Management (549300CWX1K2UKG6Q568)
 Entity status: INACTIVE Registration: RETIRED
 Reason: merger/acquisition completed 2022-06-01
 Successor LEI: DQ2T0MMUT00IPF9G9Z35
 Source: GLEIF (last updated 2024-12-16)
 FINDING: the instrument is active in FIRDS, but its issuer LEI is retired in GLEIF. A report carrying this LEI will fail any check that requires the LEI to be active. Use the successor LEI instead.
 SOURCE: FCA FIRDS (UK) local store 2026-06-06; GLEIF 2024-12-16

4.3 Claude Excel Add-in

Adding Gentek Reg Agent to Excel via the Claude Add-In creates a powerful tool to generate immediately usable output for testing in scenarios like changes to validation rules or regulator schema updates. Begin in Excel and click on Add-ins on the Home menu to add Claude:



Gentek Reg Knowledge should already be connected via Claude provided you completed the steps earlier in this User Guide. You can confirm simply by asking in the Claude dialogue box:



Example Scenario: Consider the scenario of a technology BA, who is not an expert in the granular EU EMIR data fields, needing to create synthetic data to perform positive and negative unit tests on the validation rule enumerations in the “Collateralisation Category” field.

EXAMPLE PROMPT

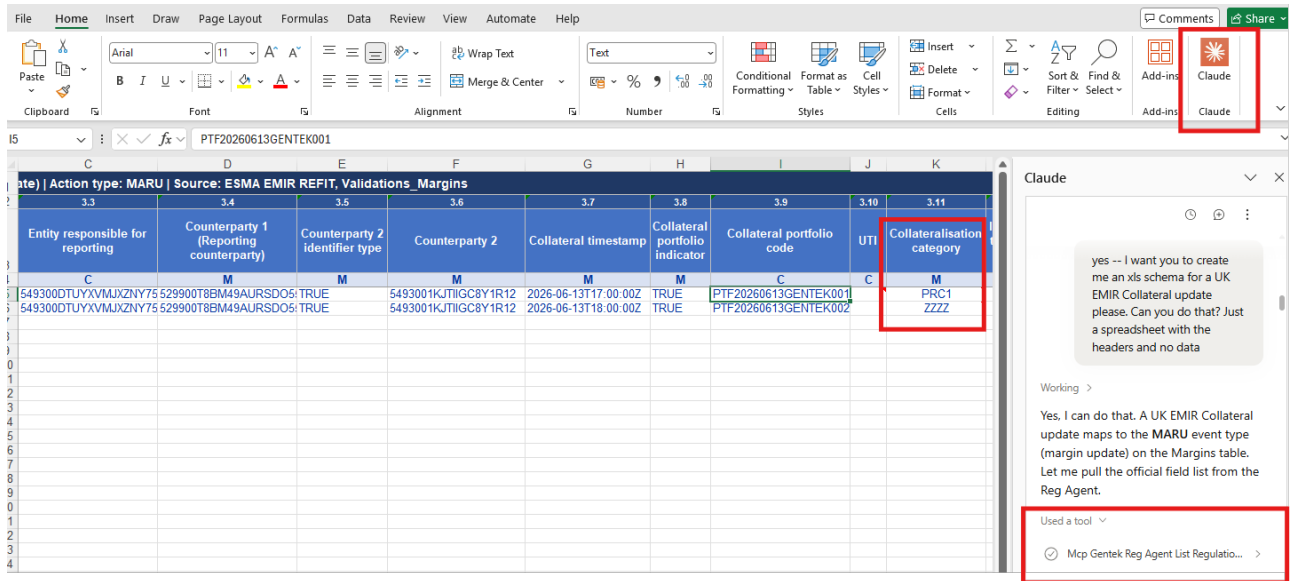
Create a CSV with all required fields for an EU EMIR Collateral Update (MARU). Lay it out as one field per column. Populate 2 rows with internally-consistent synthetic records that pass syntax and conditional validation rules, but with an important feature: 1 record must have an invalid code in the Collateralisation Category field that breaks validation.

RESPONSE (EXCERPT)

Done. New EU EMIR Collateral Update sheet, built in one pass with 2 synthetic records:

Row 5 – a self-consistent PRC1 scenario (CP1 partially collateralised, posting variation margin only) where every conditional dependency lines up.

Row 6 mirrors the row 5 PRC1 structure (different portfolio code and amounts to distinguish it) but with a deliberately invalid, made-up category code (ZZZZ) that isn't in the dropdown of permitted Collateralisation category values (UNCL, PRC1, PRC2, PRCL, OWC1, OWC2, OWP1, OWP2, FLCL).

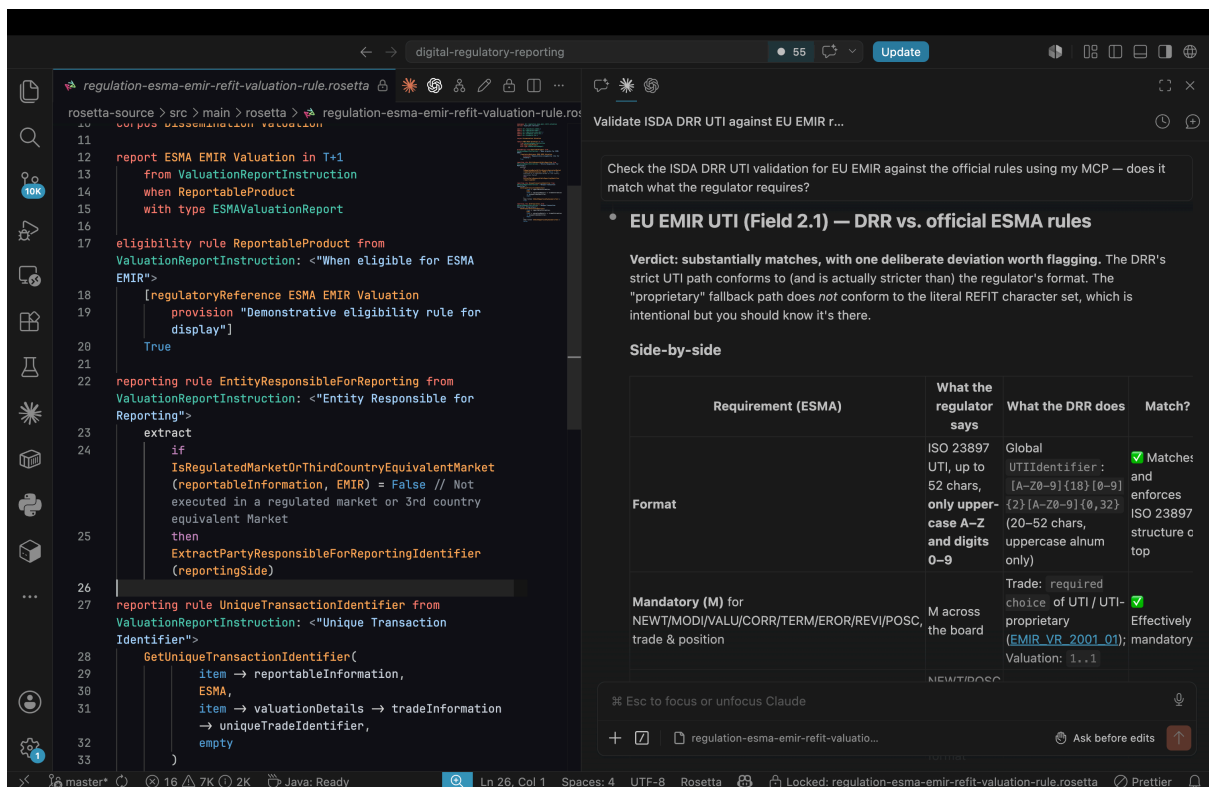


4.4 Check your reporting code against the rules

Using the Gentek Reg Agent in coding assistants lets you check your reporting logic against the official rules as you build it. Here it reviews the ISDA DRR UTI validation for EU EMIR and flags where the code diverges from what the regulator requires.

Example prompt

Check the ISDA DRR UTI validation for EU EMIR against the official rules — does it match what the regulator requires?



5 Writing Effective Queries

The server works best with clear, specific searches. A good search names what you want to check, the regulation and jurisdiction, and any identifier or filter that narrows the result.

- **Name the regulation and jurisdiction** where you can (“under UK EMIR”, “EU SFTR”). If you do not, your assistant may check both, which is sometimes exactly what you want.
- **Use field names, field numbers, keywords, or error codes.** “Field 2.1”, “UTI”, “collateral”, are all valid starting points.
- **Add filters when relevant:** event type (NEWT, MODI, MARU...), SFT type (repo, securities lending...), and trade vs position level all narrow the results to your exact case.
- **Include full identifiers** for reference data: the complete ISIN or 20-character LEI returns one exact record, while a partial name returns a list of the closest matches, best match first.
- Ask a more specific question for a more specific answer, or a broader one for a general overview.

6 Troubleshooting

- **Verification email did not arrive.** Check spam, use Resend, and confirm you used the correct work email.
- **Stuck at sign-in or “account not fully set up”.** You may still need to verify your email or accept the Acceptable Use Policy. If the verification email has not arrived, check your spam folder.
- Connecting in Claude, you are prompted to open the Claude desktop app and get an error. This can happen when the desktop app is signed in to a different account than Claude.ai. Make sure you are signed in to the same account in both Claude.ai and the Claude desktop app before you connect.
- You see a cookie error during sign-in. This can happen if you start authenticating in one browser and finish in another. Use a single browser for the whole sign-in flow. If the error continues, contact us using the details in the Support section below.
- **The assistant does not use the Gentek tools.** Check the connector is added and that access was allowed when prompted. In ChatGPT, you may also need to refresh the connector and start a new chat.
- **You are asked to sign in again.** Your sign-in session may have expired; just sign in again with your Gentek account.
- **The result is less precise than expected.** Add the regulation, jurisdiction, field number or full identifier, and any event-type filter; broad or incomplete searches return broader answers.
- **No matching entry is found.** The server reports this explicitly when the authoritative source has no match. Try a slightly different query and be more specific, e.g. field number or name.
- **A lookup fails or times out.** Both instrument (FIRDS) and entity (LEI) lookups use Gentek's own regularly updated copy of the data. If a lookup does not return, wait a moment and ask again.

If a problem continues after trying the steps above, please contact us at info@gentek.ai and we will help.

7 Support

If you need assistance with the Gentek MCP Server, contact your usual Gentek contact or email:

info@gentek.ai

When raising a support request, include a short description of the issue, the query submitted, and the assistant used (Claude, ChatGPT, or other).

If your organisation would like hands-on help getting connected, or has a need for specialised changes, we would be glad to assist. Just email us at info@gentek.ai and a member of the team will be in touch.